



Lil' People's World Newsletter

Kirkland
January 2024

Message from our Director

Happy New Year everyone! A new year brings new beginnings, new goals, and lots of fun! This year we will be continuing our family events during some of our In-Service days. We enjoy these events and creating community with our families. Families have a memorable time meeting other friends and families, chatting with the teachers, and looking through their child's portfolio. It's a good time to ask questions about the curriculum and see your child's progress. Our first family event of the year will be April 26th, so mark you calendars and plan to go. We will provide the fun.

Photo of the Month



**Best Friends
Since the Baby
Room**



Upcoming Events & Holidays

LPW will be closed January 1st for New Years Day, and January 26th for In-Service Closure.

We will be open on January 15th, Which is Martin Luther King, Jr Day

Elementary School Schedules & Closures

January 1st: New Year's Day

January 15th: Martin Luther King Jr. Day

January 23, 25, 26th: Half Day Lake Washington School District.

January 29th: No School Northshore School District

Supporting Your Child's Development. One Step at a Time...

Babies are so much fun and develop rapidly over the first year of their lives. In our classroom, we support babies' development from 4 weeks to 1 year old. The babies are offered lots of tummy time, a variety of toys as they develop (such as grasping toys when they are young, and nesting toys when they start sitting and standing). Our teachers help the babies achieve milestones with nurture and care. We also support the baby's physical development. Lil' People's World offers formula for our babies and helps them transition to solid foods by offering fruits and vegetables, later graduating to grains and meats. We offer emotional support to them when they are fussy, by offering kind words while solving their problem. Building trust and support that is needed in their early lives.

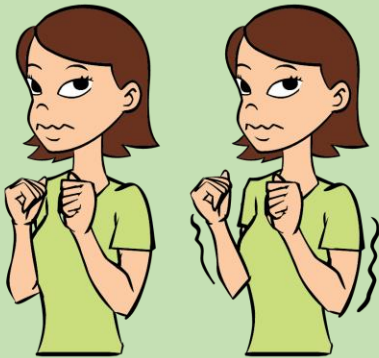
Focus on Fun

It's a new year, and the beginning of our winter quarter. We start the unit off with All About Me!

During this month we will be learning about family and feelings, which focuses on social/emotional development. The children will learn about their emotions and identifying them with themselves and others. We will learn about our bodies and body parts, and our 5 senses. The children embrace all the sensory activities that go with the 5 senses unit. We are looking forward to a fun January full of learning about ourselves.



Songs & Signs



Winter

Play...Teach...Love

Being the chef at Lil' People's World is a great job. The children love the cook, and all the good food that she makes them for lunch and snacks. The children light up when they see her bringing the food into the classrooms, they even cheer! They greet her with smiles when they are dropped off for the day. The cook puts a special ingredient into each dish that is served, and that is love.

Featured Crafts

Cooking a sweet treat in the Pre-K room. Learning Life skills, plus a tasty sensory Activity.



Special Thank You!



A special thank you to our wonderful Ms. Fran! She has been with LPW Since 2007. She has worked in all Three of our centers, and was The director at our Lynnwood center When it was open. She keeps us on our Toes with her attention to detail and Willingness to help in all our centers. Thank you, Fran, for all you do for LPW!